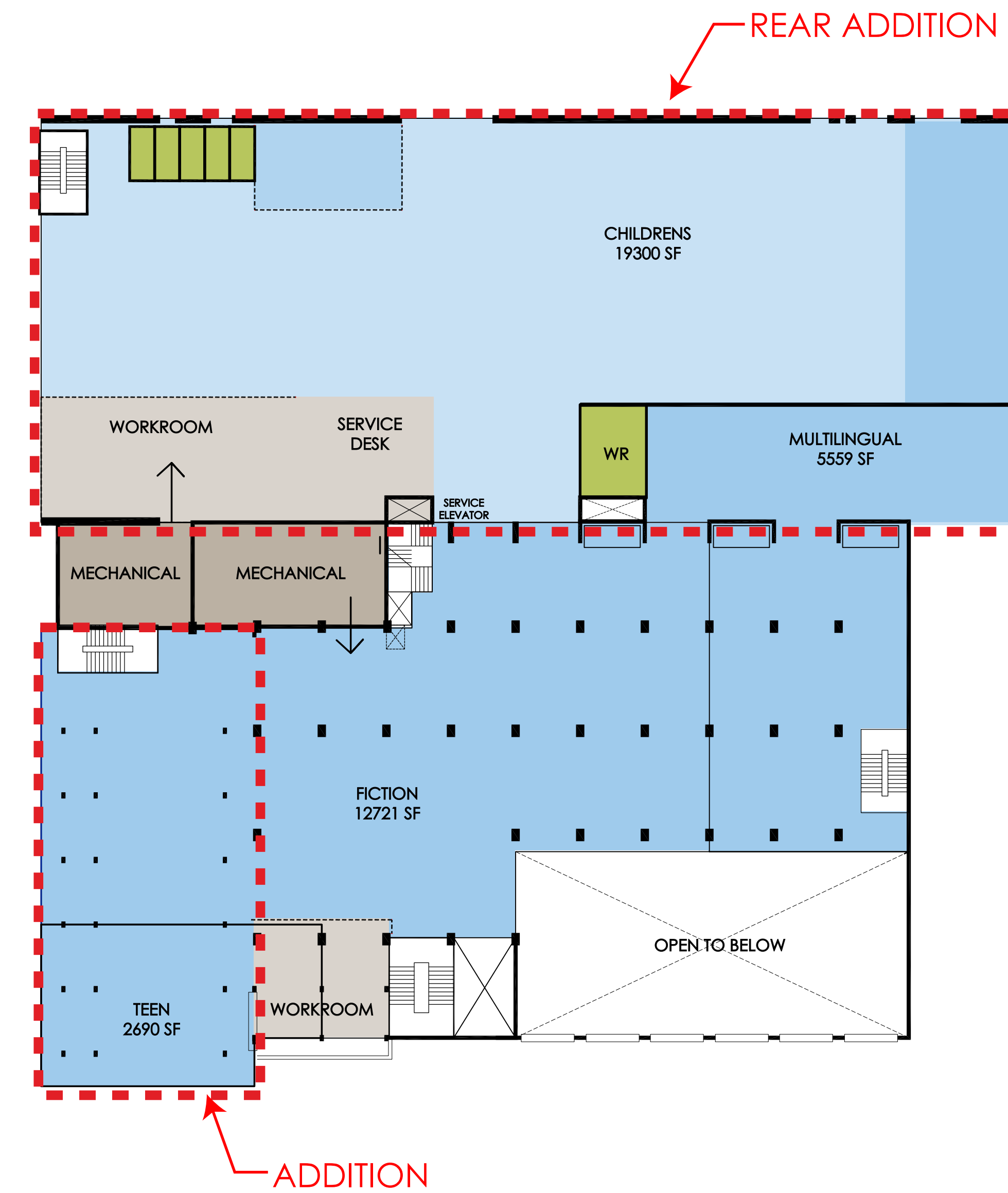


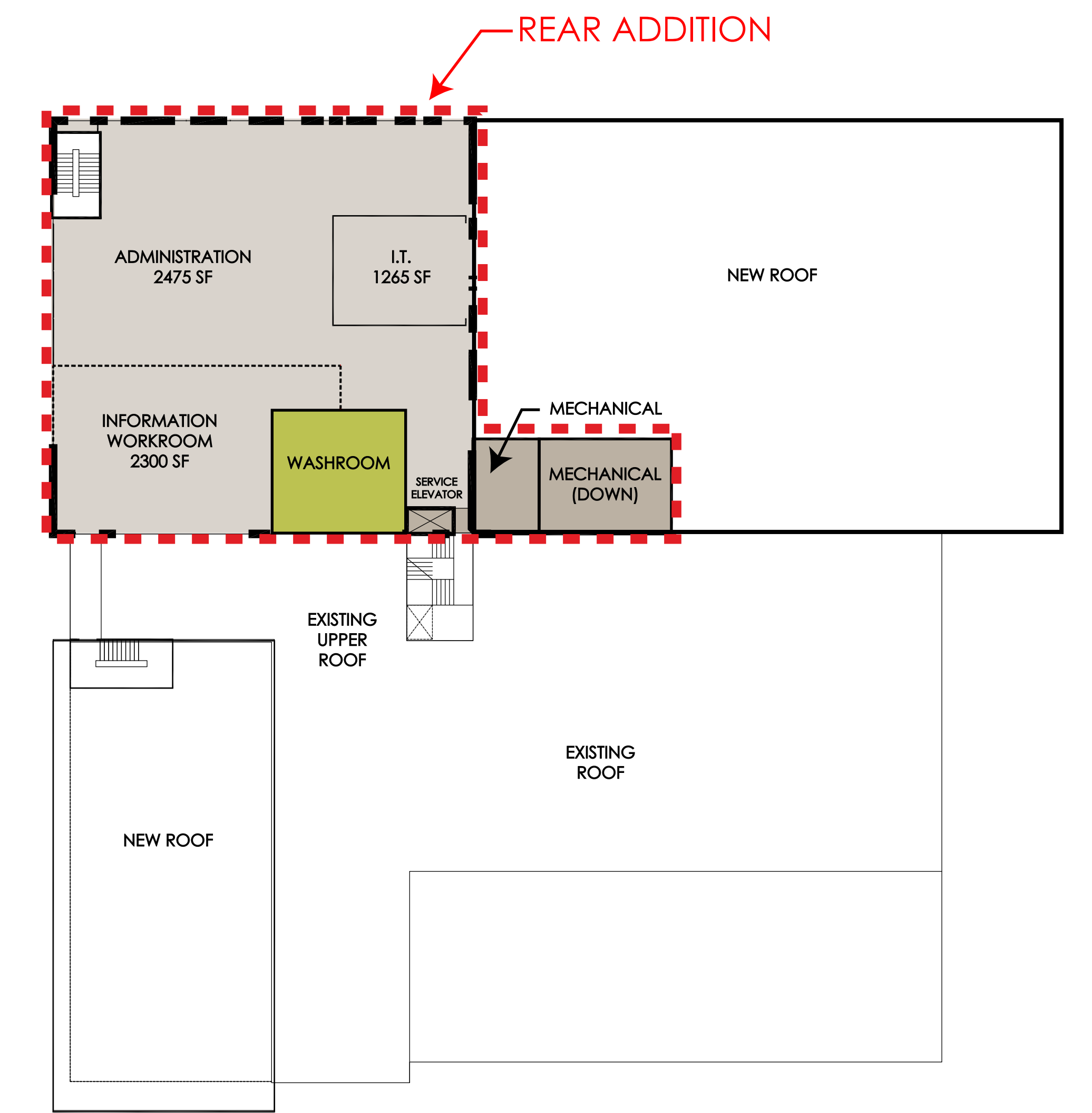
**BASEMENT**  
33,500 SF



**GROUND FLOOR**  
48,500 SF



**SECOND FLOOR**  
44,750 SF



**THIRD FLOOR**  
9,500 SF

**OPTION 3 - RENOVATION + 54,400 SF ADDITION**

KITCHENER PUBLIC LIBRARY - MAIN BRANCH  
APRIL 2008

