

AUTISM – PERSONAL STORIES

PLEASE NOTE: Due to the Main Library Construction Project, the Autism Collection has been relocated to our Grand River Stanley Park Branch

BOOKS

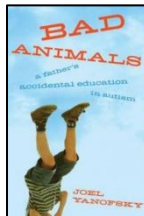
Bad animals: a father's accidental education in autism

Joel Yanofsky

Grand River Autism Collection

[618.92 Yanof](#)

2011



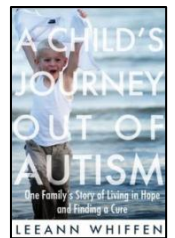
A child's journey out of autism: one family's story of living in hope and finding a cure

Leeann Whiffen

Grand River Autism Collection

[618.92858 Whiff](#)

2009



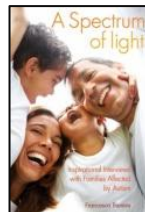
A spectrum of light : inspirational interviews with families affected by autism

Francesca Bierens

Grand River Autism Collection

[362.19685 Biere](#)

2010



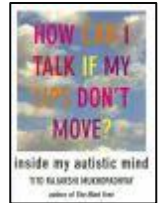
How can I talk if my lips don't move? Inside my autistic mind

Tito Rajarshi Mukhopadhyaya

Grand River Autism Collection

[618.9285882 Mukho](#)

2008



Now I see the moon: a mother, a son, a miracle

Elaine Hall with Elizabeth Kaye

Grand River Autism Collection

[618.92858 Hall](#)

2010



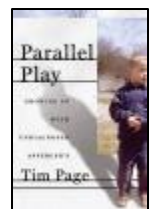
Parallel play: growing up with undiagnosed Asperger's

Tim Page

Grand River Autism Collection

[616.858832 Page](#)

2009

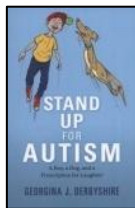


www.kpl.org

BOOKS (continued)

Stand up for autism : a boy, a dog, and a prescription for laughter

Georgina J. Derbyshire
Grand River Autism Collection
[618.9285 Derby-D](#) 2010



Boy alone: a brother's memoir

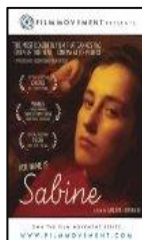
Karl Taro Greenfeld
Grand River Autism Collection
[618.92858 Green-G](#) 2009



DVD

Her name is Sabine (DVD)

Mosaïque Films
Grand River Autism Collection
[DVD 616.85882 Bonna-H](#) 2007



Temple Grandin (DVD)

HBO
Grand River Autism Collection
[DVD Templ](#)



WEBSITES

NATIONAL AUTISTIC SOCIETY (UK): REAL LIFE STORIES

<http://www.autism.org.uk/living-with-autism/real-life-stories.aspx>

AUTISM BLOGGER: THE ONLINE AUTISM SUPPORT GROUP

<http://www.autism-blog.com/>

AUTISM EVERY DAY – AUTISM SPEAKS VIDEOS (YouTube Video)

<http://www.youtube.com/watch?v=FDMMwG7RrFQ>

NEED MORE INFORMATION?

PHONE: (519) 743-7502

EMAIL: askus@kpl.org

WEBSITE:

<http://www.kpl.org/ref/healthlink/autism.html>

IN PERSON: at any KPL location